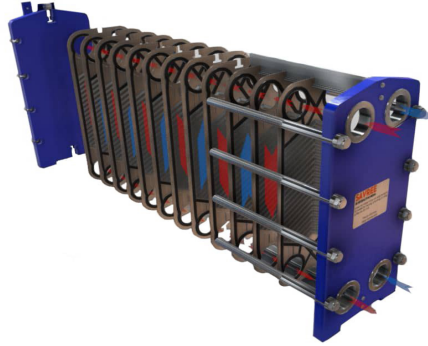




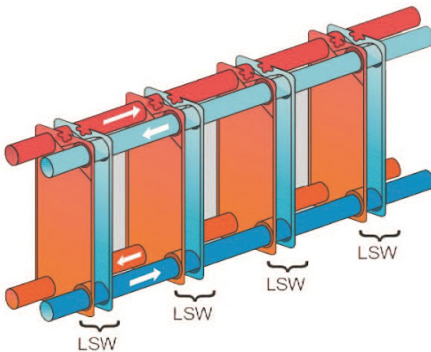
## products:

- 1.gasket plate heat exchanger
- 2.semi welded plate heat exchanger
- 3.welded plate heat exchanger
- 4.CIP(cleaning in place system)
- 5.shell and tube heat exchanger
- 6.brazed plate heat exchanger
7. Other products



# GPHE

## Gasket plate heat exchanger



CE HSE  
CE HSE

### 1. Top Quality, Certified Safety:

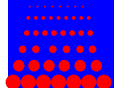
Our plate heat exchangers meet HSE and CE standards, ensuring exceptional quality and safety.

### 2. High Capacity Performance:

We produce up to 5000 units annually delivering reliable performance for diverse industrial needs.

### 3. Efficient and Reliable:

Our advanced plate heat exchangers offer optimal performance with minimal energy use, adhering to global standards.



# SWPHE

## semi welded plate heat exchanger

### 1. Durable and Efficient for Oil & Gas:

Our SWPHEs are built for durability and high efficiency, making them ideal for demanding industries like oil & gas.

### 2. Enhanced Performance:

Advanced welding technology ensures superior heat transfer and reliability in various industrial environments.

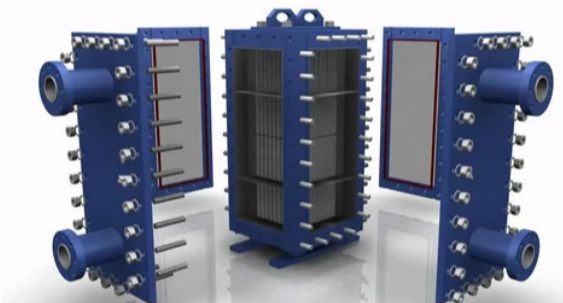
### 3. High-Quality Construction:

Featuring robust design and precise engineering, our SWPHEs provide exceptional performance and long-lasting quality for your thermal management needs.



# WPHE

## welded plate heat exchanger



### 1. Compact and Efficient Design:

Ideal for space-saving applications.

### 2. High Heat Transfer Performance:

Maximizes energy efficiency.

### 3. Robust and Corrosion-Resistant:

Built to withstand harsh environments.

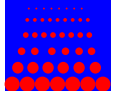
### 4. Ideal for HVAC and Industrial Applications:

#### Applications:

Versatile for diverse systems.

### 5. Reliable and Low Maintenance:

Ensures long-term performance with minimal upkeep.



# CIP

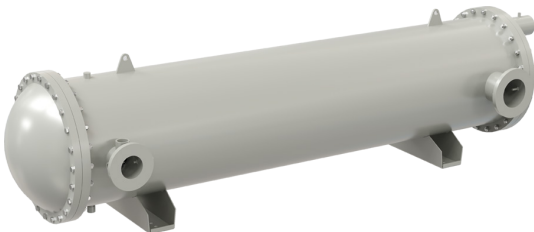
- 1. Streamlined Cleaning Process**  
Automated, efficient, and cost-effective.
- 2. Consistent Hygiene Standards**  
Ensures high-level sanitation.
- 3. Resource Efficiency**  
Optimizes water and chemical use.
- 4. Extended Equipment Life**  
Reduces wear and maintenance.
- 5. Customizable and Scalable**  
Adapts to various needs.

## cleaning in place

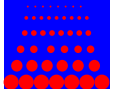


# SHELL & TUBE

## shell & tube heat exchanger



- 1. Efficient Heat Transfer Design**  
Maximizes thermal efficiency for various applications.
- 2. Durable Construction**  
Built with high-quality materials for longevity.
- 3. Versatile Performance**  
Suitable for a range of industrial processes.
- 4. Robust and Reliable**  
Sturdy design with dependable performance.



# BPHE

## Brazed plate heat exchanger

### 1. Compact and Efficient Design

Space-saving solution with exceptional heat transfer.

### 2. Advanced Thermal Efficiency

Optimizes heat exchange in diverse applications.

### 3. Durable and Reliable Construction

Engineered with robust materials for long-term performance.

### 4. Flexible Configuration Options

Customizable to meet specific process requirements.



# OTHER...

- .spiral heat exchanger
- .finned plate heat exchanger
- . other tools to controlling phe function
- . objects that use in heat exchangers structure gasket , plate &..
- ...

